

p16 Polyclonal Antibody

Catalog Number:E-AB-40264

Note: Centrifuge before opening to ensure complete recovery of vial contents.

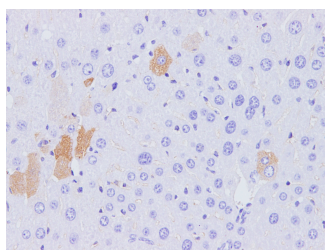
Description

Reactivity	Human,Rat
Immunogen	Recombinant Rat Cyclin-dependent kinase inhibitor 2A protein
Host	Rabbit
Isotype	IgG
Purification	Affinity purification
Conjugation	Unconjugated
Formulation	PBS with 0.05% Proclin300, 50% glycerol, pH7.3.

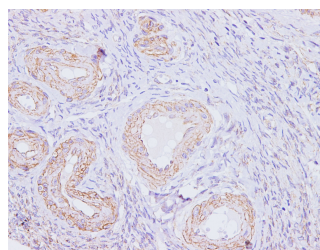
Applications Recommended Dilution

IHC	1:50-1:200
IF	1:100-1:200

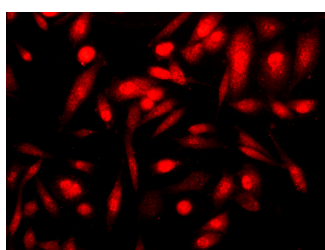
Data



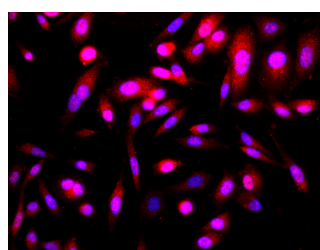
Immunohistochemistry of paraffinembedded Rat liver using p16 Polyclonal Antibody at dilution of 1:100



Immunohistochemistry of paraffinembedded Human ovarian using p16 Polyclonal Antibody at dilution of 1:100



Immunofluorescence analysis of PC-3 cells using p16 Polyclonal Antibody at dilution of 1:100



Immunofluorescence analysis of PC-3 cells using p16 Polyclonal Antibody at dilution of 1:100

Preparation & Storage

Storage Store at -20°C. Avoid freeze / thaw cycles.

Background

This gene generates several transcript variants which differ in their first exons. At least three alternatively spliced variants encoding distinct proteins have been reported, two of which encode structurally related isoforms known to function as inhibitors of CDK4 kinase. The remaining transcript includes an alternate first exon located 20 Kb upstream of the remainder of the gene; this transcript contains an alternate open reading frame (ARF) that specifies a protein which is structurally unrelated to the products of the other variants. This ARF product functions as a stabilizer of the tumor

For Research Use Only

A Reliable Research Partner in Life Science and Medicine

Tel: 400-999-2100

Email: techsupport@elabscience.cn

Web: www.elabscience.cn

p16 Polyclonal Antibody

Catalog Number:E-AB-40264



suppressor protein p53 as it can interact with, and sequester, the E3 ubiquitin-protein ligase MDM2, a protein responsible for the degradation of p53.

For Research Use Only

A Reliable Research Partner in Life Science and Medicine

Tel: 400-999-2100

Email: techsupport@elabscience.cn

Web: www.elabscience.cn