

**Note:** Centrifuge before opening to ensure complete recovery of vial contents.

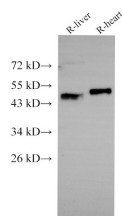
## Description

<b>Reactivity</b>	Mouse,Rat
<b>Immunogen</b>	Recombinant Mouse Basigin protein
<b>Host</b>	Rabbit
<b>Isotype</b>	IgG
<b>Purification</b>	Affinity purification
<b>Conjugation</b>	Unconjugated
<b>Formulation</b>	PBS with 0.05% Proclin300, 50% glycerol, pH7.3.

## Applications Recommended Dilution

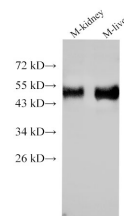
<b>WB</b>	1:1000-1:2000
<b>IHC</b>	1:100-1:300

## Data

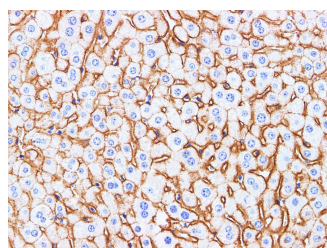


Western Blot analysis of Rat liver and Rat heart using BSG Polyclonal Antibody at dilution of 1:1000

**Observed Mw:30kDa,40-60kDa**  
**Calculated Mw:30kDa,40-60kDa**



Western Blot analysis of Mouse kidney and Mouse liver using BSG Polyclonal Antibody at dilution of 1:1000



Immunohistochemistry of paraffin-embedded Mouse liver using BSG Polyclonal Antibody at dilution of 1:200

## Preparation & Storage

**Storage** Store at -20°C. Avoid freeze / thaw cycles.

## Background

BSG,also named as 5F7,Basigin,EMMPRIN,TCSF and CD147,plays pivotal roles in spermatogenesis,embryo implantation,neural network formation and tumor progression. It stimulates adjacent fibroblasts to produce matrix metalloproteinases (MMPs).CD147 may target monocarboxylate transporters SLC16A1,SLC16A3 and SLC16A8 to

## For Research Use Only

A Reliable Research Partner in Life Science and Medicine

Tel: 400-999-2100

Email: [techsupport@elabscience.cn](mailto:techsupport@elabscience.cn)

Web: [www.elabscience.cn](http://www.elabscience.cn)

# BSG Polyclonal Antibody

Catalog Number:E-AB-40297



plasma membranes of retinal pigment epithelium and neural retina. It seems to be a receptor for oligomannosidic glycans. CD147 is a receptor of CypA, inducing matrix metalloproteinase expression and mediating the degradation of the extracellular matrix, plays an important role in tumorigenesis and invasion in oral cancer. It has been considered as an objective and effective marker to predict invasion and prognosis in various cancers.

---

## For Research Use Only

A Reliable Research Partner in Life Science and Medicine

Tel: 400-999-2100

Email: [techsupport@elabscience.cn](mailto:techsupport@elabscience.cn)

Web: [www.elabscience.cn](http://www.elabscience.cn)