

# EpCAM Polyclonal Antibody

Catalog Number:E-AB-40300

**Note:** Centrifuge before opening to ensure complete recovery of vial contents.

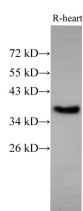
## Description

<b>Reactivity</b>	Human,Mouse,Rat
<b>Immunogen</b>	Recombinant Human SDHA protein expressed by E.coli
<b>Host</b>	Rabbit
<b>Isotype</b>	IgG
<b>Purification</b>	Affinity purification
<b>Conjugation</b>	Unconjugated
<b>Formulation</b>	PBS with 0.05% Proclin300, 50% glycerol, pH7.3.

## Applications Recommended Dilution

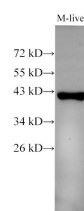
<b>WB</b>	1:500-1:1000
<b>IHC</b>	300-1:700

## Data

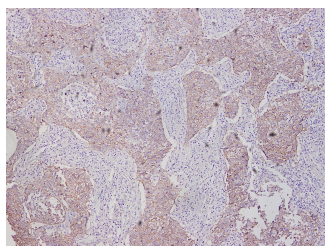


Western Blot analysis of Rat Heart using EpCAM Polyclonal Antibody at dilution of 1:500

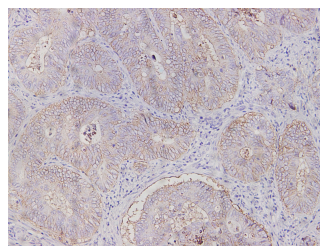
**Observed Mw:35,40 kDa**  
**Calculated Mw:35,40 kDa**



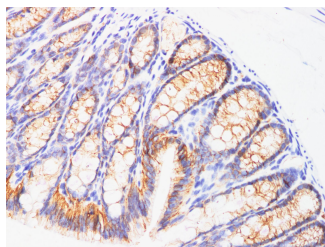
Western Blot analysis of Mouse liver using EpCAM Polyclonal Antibody at dilution of 1:500



Immunohistochemistry of paraffin-embedded Human lung cancer tissue using EpCAM Polyclonal Antibody at dilution of 1:700(×100)



Immunohistochemistry of paraffin-embedded Human colon cancer tissue using EpCAM Polyclonal Antibody at dilution of 1:700(×200)



Immunohistochemistry of paraffin-embedded Mouse

## For Research Use Only

A Reliable Research Partner in Life Science and Medicine

Tel: 400-999-2100

Email: [techsupport@elabscience.cn](mailto:techsupport@elabscience.cn)

Web: [www.elabscience.cn](http://www.elabscience.cn)

# EpCAM Polyclonal Antibody

Catalog Number:E-AB-40300



colon using EpCAM Polyclonal Antibody at dilution  
of 1:100

## Preparation & Storage

**Storage** Store at -20°C. Avoid freeze / thaw cycles.

## Background

Epithelial cell adhesion molecule (EpCAM,CD326) is a type I transmembrane glycoprotein that functions as a homophilic,epithelial-specific intercellular cell-adhesion molecule. In addition to cell adhesion,EpCAM is also involved in cellular signaling,cell migration,proliferation,and differentiation. EpCAM is highly expressed on most carcinomas and therefore of potential use as a diagnostic and prognostic marker for a variety of carcinomas,and has become a therapeutic target.

## For Research Use Only

A Reliable Research Partner in Life Science and Medicine

Tel: 400-999-2100

Email: [techsupport@elabscience.cn](mailto:techsupport@elabscience.cn)

Web: [www.elabscience.cn](http://www.elabscience.cn)