

PE/Cyanine7 Anti-Mouse F4/80 Antibody[CI:A3-1]

Catalog No.	E-AB-F0995UH	Reactivity	Mouse
Storage	Store at 2~8°C, Avoid freeze / thaw cycles	Applications	FCM

Important Note: Centrifuge before opening to ensure complete recovery of vial contents.

Antigen Information

Alternate Names	Adhesion G protein-coupled receptor E1, Adgre1, Cell surface glycoprotein F4/80, EGF-like module receptor 1, Adgre1, Emr1, Gp480
Uniprot ID	Q61549
Background	F4/80 is a 160 kD glycoprotein. It is characterized as a member of the epidermal growth factor (EGF)-transmembrane 7 (TM7) family. F4/80, also known as EMR1 or Ly71, has been widely used as a murine macrophage marker, which is expressed on the majority of tissue macrophages including peritoneal macrophages, macrophages in lung, gut, thymus and red pulp of spleen (but not on the macrophages located in T cell areas of the spleen, lymph node and Peyer's patch), Kuffer cells, Langerhans cells, and bone marrow stromal cells. F4/80 has also been shown on a subset of dendritic cells. The biological ligand of F4/80 has not been identified, but it has been reported that F4/80 is required for induction of CD8+ T cells-mediated peripheral tolerance.

Product Details

Form	Liquid
Concentration	0.2 mg/mL
Size	25µg/100µg
Clone No.	CI:A3-1
Host	Rat
Isotype	Rat IgG2b, κ
Reactivity	Mouse
Application	FCM
Isotype Control	PE/Cyanine7 Rat IgG2b, κ Isotype Control[LTF-2] [Product E-AB-F09843H]
Storage Buffer	Phosphate buffered solution, pH 7.2, containing 0.09% sodium azide and 1% BSA.
Shipping	Biological ice pack at 4 °C
Stability & Storage	Keep as concentrated solution. Store at 2~8°C and protected from prolonged exposure to light. Do not freeze. This product is guaranteed up to one year from purchase.

Fluorophore

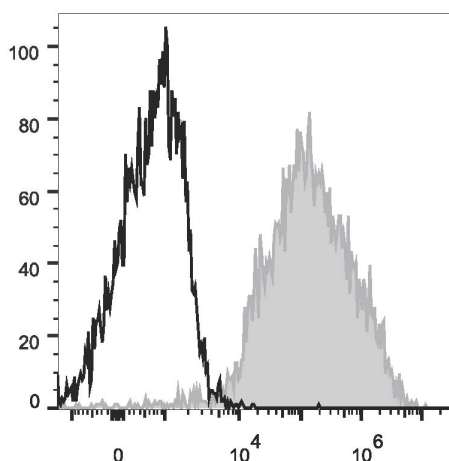
Conjugation: PE/Cyanine7

PE/Cyanine7 is designed to be excited by the Blue (488 nm), Green (532 nm) and yellow-green (561 nm) lasers and detected using an optical filter centered near 775 nm (e.g., a 780/60 nm bandpass filter).

Recommended usage

Each lot of this antibody is quality control tested by flow cytometric analysis. Please check your vial before the experiment. Since applications vary, the appropriate dilutions must be determined for individual use. We suggest each investigator should titrate the reagent to obtain optimal results [The recommended concentration is 0.1-1 $\mu\text{g}/10^6$ cells in 100 μL volume].

Product data



Mouse abdominal macrophages elicited by starch broth are stained with PE/Cyanine7 Anti-Mouse F4/80 Antibody (filled gray histogram). Unstained macrophages (blank black histogram) are used as control.

Related Information

1. 流式细胞术样本制备技术 <https://www.elabscience.cn/List-detail-10425.html>
2. 流式细胞表面染色步骤 <https://www.elabscience.cn/List-detail-10423.html>
3. 流式实验常见问题及解决方案 <https://www.elabscience.cn/List-detail-5690.html>
4. 如何通过光谱图选择合适的检测通道? <https://www.elabscience.cn/List-detail-16891.html>