

# S100A9 Polyclonal Antibody

Catalog Number:E-AB-40316



**Note:** Centrifuge before opening to ensure complete recovery of vial contents.

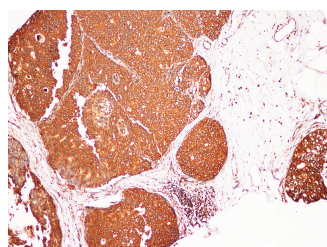
## Description

|                     |   |
|---------------------|---|
| <b>Reactivity</b>   | Human   |
| <b>Immunogen</b>    | Recombinant Human Protein S100-A9 protein       |
| <b>Host</b>         | Rabbit  |
| <b>Isotype</b>      | IgG   |
| <b>Purification</b> | Affinity purification                           |
| <b>Conjugation</b>  | Unconjugated                                    |
| <b>Formulation</b>  | PBS with 0.05% Proclin300, 50% glycerol, pH7.3. |

## Applications Recommended Dilution

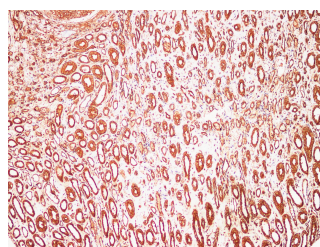
|            |             |
|------------|-------------|
| <b>IHC</b> | 1:100-1:400 |
|------------|-------------|

## Data



Immunohistochemistry of paraffin-embedded Human breast cancer using S100A9 Polyclonal Antibody at dilution of 1:200.

**Observed Mw:**



Immunohistochemistry of paraffin-embedded Human kidney using S100A9 Polyclonal Antibody at dilution of 1:200.

## Preparation & Storage

|                |   |
|----------------|---|
| <b>Storage</b> | Store at -20°C. Avoid freeze / thaw cycles. |
|----------------|---|

## Background

The protein encoded by this gene is a member of the S100 family of proteins containing 2 EF-hand calcium-binding motifs. S100 proteins are localized in the cytoplasm and/or nucleus of a wide range of cells, and involved in the regulation of a number of cellular processes such as cell cycle progression and differentiation. S100 genes include at least 13 members which are located as a cluster on chromosome 1q21.

## For Research Use Only

A Reliable Research Partner in Life Science and Medicine

Tel: 400-999-2100

Email: [techsupport@elabscience.cn](mailto:techsupport@elabscience.cn)

Web: [www.elabscience.cn](http://www.elabscience.cn)