

# PDCD4 Polyclonal Antibody

Catalog Number:E-AB-40340



**Note:** Centrifuge before opening to ensure complete recovery of vial contents.

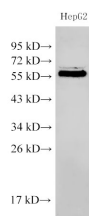
## Description

<b>Reactivity</b>	Human,Mouse,Rat
<b>Immunogen</b>	Recombinant Human Programmed cell death protein 4 protein
<b>Host</b>	Rabbit
<b>Isotype</b>	IgG
<b>Purification</b>	Affinity purification
<b>Conjugation</b>	Unconjugated
<b>Formulation</b>	PBS with 0.05% Proclin300, 50% glycerol, pH7.3.

## Applications Recommended Dilution

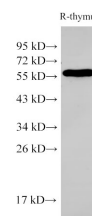
<b>WB</b>	1:500-1:1000
<b>IHC</b>	1:100-1:300

## Data

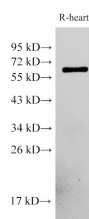


Western Blot analysis of HepG2 cells using PDCD4 Polyclonal Antibody at dilution of 1:500

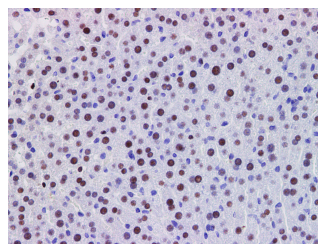
**Observed Mw:56 kDa**  
**Calculated Mw:50,51 kDa**



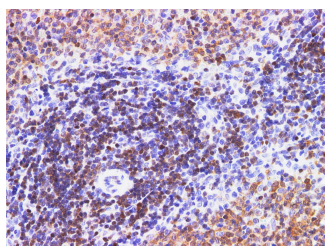
Western Blot analysis of Rat thymus cells using PDCD4 Polyclonal Antibody at dilution of 1:500



Western Blot analysis of Rat heart cells using PDCD4 Polyclonal Antibody at dilution of 1:500



Immunohistochemistry of paraffin-embedded Mouse liver using PDCD4 Polyclonal Antibody at dilution of 1:200



Immunohistochemistry of paraffin-embedded Rat

## For Research Use Only

A Reliable Research Partner in Life Science and Medicine

Tel: 400-999-2100

Email: [techsupport@elabscience.cn](mailto:techsupport@elabscience.cn)

Web: [www.elabscience.cn](http://www.elabscience.cn)

# PDCD4 Polyclonal Antibody

Catalog Number:E-AB-40340



spleen using PDCD4 Polyclonal Antibody at dilution  
of 1:200

## Preparation & Storage

**Storage** Store at -20°C. Avoid freeze / thaw cycles.

## Background

Programmed cell death 4 (Pdc4) is a novel tumor suppressor that inhibits translation, progression and invasion. It was first identified as being differentially upregulated during apoptosis. Pdc4 interferes with the activity of the eukaryotic initiation factor (eIF) 4A by displacing the scaffold protein eIF4G from its binding to the RNA helicase eIF4A.

## For Research Use Only

A Reliable Research Partner in Life Science and Medicine

Tel: 400-999-2100

Email: [techsupport@elabscience.cn](mailto:techsupport@elabscience.cn)

Web: [www.elabscience.cn](http://www.elabscience.cn)