

**Note:** Centrifuge before opening to ensure complete recovery of vial contents.

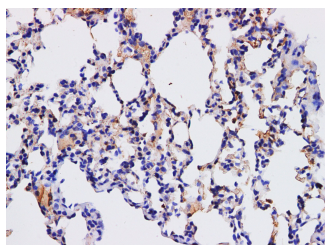
## Description

<b>Reactivity</b>	Mouse
<b>Immunogen</b>	Recombinant Mouse 15-hydroxyprostaglandin dehydrogenase [NAD(+)] protein
<b>Host</b>	Rabbit
<b>Isotype</b>	IgG
<b>Purification</b>	Affinity purification
<b>Conjugation</b>	Unconjugated
<b>Formulation</b>	PBS with 0.05% Proclin300, 50% glycerol, pH7.3.

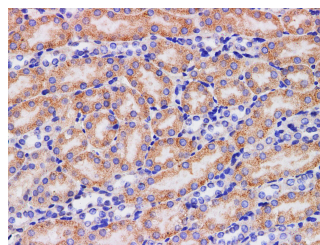
## Applications Recommended Dilution

<b>IHC</b>	1:100-1:200
------------	-------------

## Data



Immunohistochemistry of paraffin-embedded Mouse lung using HPGD Polyclonal Antibody at dilution of 1:200



Immunohistochemistry of paraffin-embedded Mouse kidney using HPGD Polyclonal Antibody at dilution of 1:200

## Preparation & Storage

**Storage** Store at -20°C. Avoid freeze / thaw cycles.

## Background

This gene encodes a member of the short-chain nonmetalloenzyme alcohol dehydrogenase protein family. The encoded enzyme is responsible for the metabolism of prostaglandins, which function in a variety of physiologic and cellular processes such as inflammation. Mutations in this gene result in primary autosomal recessive hypertrophic osteoarthropathy and cranioosteoarthropathy. Multiple transcript variants encoding different isoforms have been found for this gene.

## For Research Use Only

A Reliable Research Partner in Life Science and Medicine

Tel: 400-999-2100

Email: [techsupport@elabscience.cn](mailto:techsupport@elabscience.cn)

Web: [www.elabscience.cn](http://www.elabscience.cn)