

CD74 Polyclonal Antibody

Catalog Number:E-AB-40347

Note: Centrifuge before opening to ensure complete recovery of vial contents.

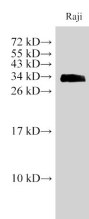
Description

Reactivity	Human,Mouse,Rat
Immunogen	Recombinant Human HLA class II histocompatibility antigen gamma chain protein
Host	Rabbit
Isotype	IgG
Purification	Affinity purification
Conjugation	Unconjugated
Formulation	PBS with 0.05% Proclin300, 50% glycerol, pH7.3.

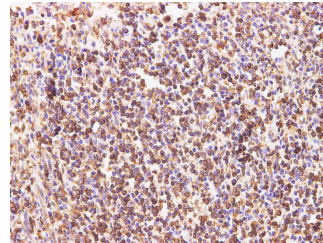
Applications Recommended Dilution

WB	1:500-1:1000
IHC	1:100-1:300

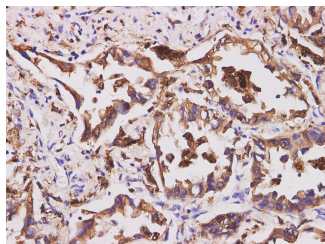
Data



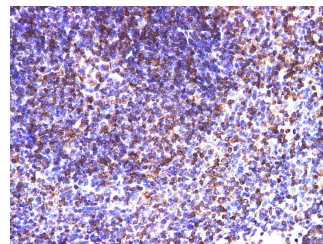
Western Blot analysis of Raji cell using CD74 Polyclonal Antibody at dilution of 1:1000
Observed Mw:35 kDa
Calculated Mw:33,26,18 kDa



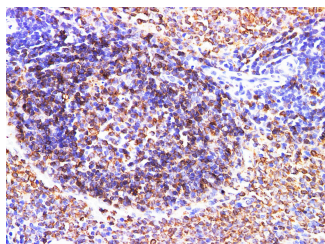
Immunohistochemistry of paraffin-embedded Human tonsil using CD74 Polyclonal Antibody at dilution of 1:200



Immunohistochemistry of paraffin-embedded Human lung cancer using CD74 Polyclonal Antibody at dilution of 1:200



Immunohistochemistry of paraffin-embedded Mouse spleen using CD74 Polyclonal Antibody at dilution of 1:200



Immunohistochemistry of paraffin-embedded Rat

For Research Use Only

A Reliable Research Partner in Life Science and Medicine

Tel: 400-999-2100

Email: techsupport@elabscience.cn

Web: www.elabscience.cn

CD74 Polyclonal Antibody

Catalog Number:E-AB-40347



spleen using CD74 Polyclonal Antibody at dilution of
1:200

Preparation & Storage

Storage Store at -20°C. Avoid freeze / thaw cycles.

Background

The protein encoded by this gene associates with class II major histocompatibility complex (MHC) and is an important chaperone that regulates antigen presentation for immune response. It also serves as cell surface receptor for the cytokine macrophage migration inhibitory factor (MIF) which, when bound to the encoded protein, initiates survival pathways and cell proliferation. This protein also interacts with amyloid precursor protein (APP) and suppresses the production of amyloid beta (Abeta). Multiple alternatively spliced transcript variants encoding different isoforms have been identified.

For Research Use Only

A Reliable Research Partner in Life Science and Medicine

Tel: 400-999-2100

Email: techsupport@elabscience.cn

Web: www.elabscience.cn