

# Caspase-1 Polyclonal Antibody

Catalog Number:E-AB-40529

1 Publications



**Note:** Centrifuge before opening to ensure complete recovery of vial contents.

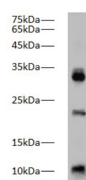
## Description

<b>Reactivity</b>	Zebrafish
<b>Immunogen</b>	Synthetic peptide corresponding to Zebrafish caspase-1 conjugated to keyhole limpet haemocyanin.
<b>Host</b>	Rabbit
<b>Isotype</b>	IgG
<b>Purification</b>	Antigen Affinity Purification
<b>Conjugation</b>	Unconjugated
<b>Formulation</b>	PBS with 0.02% sodium azide, 50% glycerol,pH 7.4

## Applications Recommended Dilution

<b>WB</b>	1:1000-2000
-----------	-------------

## Data



Western blot of Zebrafish whole lysates with anti-Caspase-1 rabbit polyclonal antibody at dilution of 1:1000.

**Observed Mw:20kDa,42kDa**

**Calculated Mw:45, 42, 35, 22, 20kDa**

## Preparation & Storage

<b>Storage</b>	Store at -20°C. Avoid freeze / thaw cycles.
----------------	---

## Background

CASP1(caspase-1) is also named as IL1BC, IL1BCE and belongs to the peptidase C14A family. It is a cysteine protease that regulates inflammatory processes through its capacity to process and activate the interleukin-1-beta (IL1B), IL18, and IL33 precursor

## For Research Use Only

A Reliable Research Partner in Life Science and Medicine

Tel: 400-999-2100

Email: [techsupport@elabscience.cn](mailto:techsupport@elabscience.cn)

Web: [www.elabscience.cn](http://www.elabscience.cn)