

SDHB Polyclonal Antibody

Catalog Number:D-AB-10362L

Note: Centrifuge before opening to ensure complete recovery of vial contents.

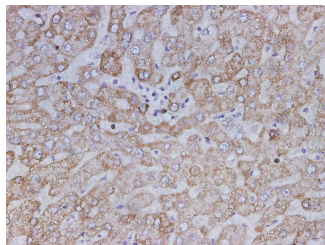
Description

Reactivity	Human
Immunogen	Recombinant Human SDHB protein expressed by E.coli
Host	Rabbit
Isotype	IgG
Purification	Antigen Affinity Purification
Conjugation	Unconjugated
Formulation	PBS with 0.02% sodium azide, 50% glycerol, pH 7.4

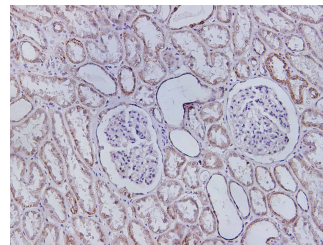
Applications Recommended Dilution

IHC	1:75-1:150
------------	------------

Data



Immunohistochemistry of paraffin-embedded Human liver using SDHB Polyclonal Antibody at dilution of 1:150



Immunohistochemistry of paraffin-embedded Human kidney using SDHB Polyclonal Antibody at dilution of 1:150

Preparation & Storage

Storage Store at -20°C. Avoid freeze / thaw cycles.

Background

Complex II of the respiratory chain, which is specifically involved in the oxidation of succinate, carries electrons from FADH to CoQ. The complex is composed of four nuclear-encoded subunits and is localized in the mitochondrial inner membrane. The iron-sulfur subunit is highly conserved and contains three cysteine-rich clusters which may comprise the iron-sulfur centers of the enzyme. Sporadic and familial mutations in this gene result in paragangliomas and pheochromocytoma, and support a link between mitochondrial dysfunction and tumorigenesis.

For Research Use Only

A Reliable Research Partner in Life Science and Medicine

Tel: 400-999-2100

Email: techsupport@elabscience.cn

Web: www.elabscience.cn