

# Cyclin E1 Polyclonal Antibody

Catalog Number: E-AB-31074 2 Publications

**Note:** Centrifuge before opening to ensure complete recovery of vial contents.

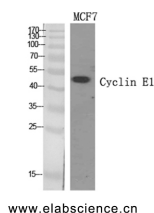
## Description

|                     |   |
|---------------------|---|
| <b>Reactivity</b>   | Human, Mouse, Rat   |
| <b>Immunogen</b>    | Synthesized peptide derived from the Internal region of human Cyclin E1 |
| <b>Host</b>         | Rabbit  |
| <b>Isotype</b>      | IgG   |
| <b>Purification</b> | Affinity purification   |
| <b>Conjugation</b>  | Unconjugated  |
| <b>Formulation</b>  | PBS with 0.02% sodium azide, 0.5% BSA and 50% glycerol, pH7.4           |

## Applications Recommended Dilution

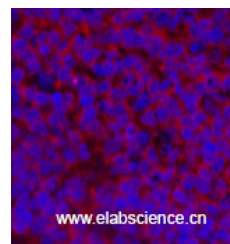
|              |              |
|--------------|--------------|
| <b>WB</b>    | 1:500-1:2000 |
| <b>IHC</b>   | 1:100-1:300  |
| <b>IF</b>    | 1:200-1:1000 |
| <b>ELISA</b> | 1:20000      |

## Data



Western Blot analysis of MCF7 cells using Cyclin E1 Polyclonal Antibody at dilution of 1:500.

**Observed Mw: 49kDa**  
**Calculated Mw: 47kDa**



Immunofluorescence analysis of Rat spleen tissue using Cyclin E1 Polyclonal Antibody at dilution of 1:200.

## Preparation & Storage

**Storage** Store at -20°C. Avoid freeze / thaw cycles.

## Background

Essential for the control of the cell cycle at the G1/S (start) transition.

## For Research Use Only

A Reliable Research Partner in Life Science and Medicine

Tel: 400-999-2100

Email: [techsupport@elabscience.cn](mailto:techsupport@elabscience.cn)

Web: [www.elabscience.cn](http://www.elabscience.cn)