

CK-19 Polyclonal Antibody

Catalog Number:E-AB-31146



Note: Centrifuge before opening to ensure complete recovery of vial contents.

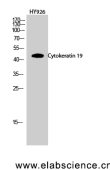
Description

Reactivity	Human,Mouse,Rat
Immunogen	Synthesized peptide derived from the Internal region of human Cytokeratin 19
Host	Rabbit
Isotype	IgG
Purification	Affinity purification
Conjugation	Unconjugated
Formulation	PBS with 0.02% sodium azide, 0.5% BSA and 50% glycerol, pH7.4

Applications Recommended Dilution

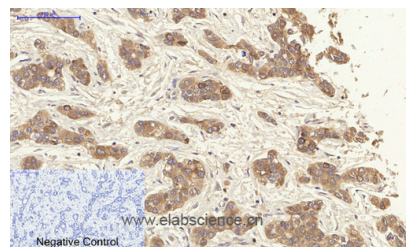
WB	1:500-1:2000
IHC	1:100-1:300
IF	1:200-1:1000
ELISA	1:10000

Data

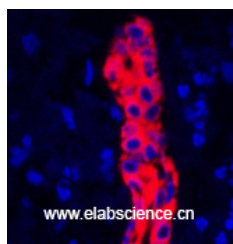


Western Blot analysis of HY926 cells using CK-19 Polyclonal Antibody at dilution of 1:1000.

Observed Mw:44kDa
Calculated Mw:44-59kDa



Immunohistochemistry of paraffin-embedded Human liver cancer tissue using CK-19 Polyclonal Antibody at dilution of 1:200.



Immunofluorescence analysis of Human liver tissue using CK-19 Polyclonal Antibody at dilution of 1:200.

Preparation & Storage

Storage Store at -20°C. Avoid freeze / thaw cycles.

Background

For Research Use Only

A Reliable Research Partner in Life Science and Medicine

Tel: 400-999-2100

Email: techsupport@elabscience.cn

Web: www.elabscience.cn

CK-19 Polyclonal Antibody

Catalog Number:E-AB-31146



Involved in the organization of myofibers. Together with KRT8, helps to link the contractile apparatus to dystrophin at the costameres of striated muscle.

For Research Use Only

A Reliable Research Partner in Life Science and Medicine

Tel: 400-999-2100

Email: techsupport@elabscience.cn

Web: www.elabscience.cn