

# EAAT1 Polyclonal Antibody

Catalog Number: E-AB-31258

2 Publications



**Note:** Centrifuge before opening to ensure complete recovery of vial contents.

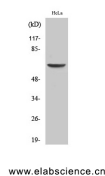
## Description

<b>Reactivity</b>	Human
<b>Immunogen</b>	Synthesized peptide derived from the C-terminal region of human EAAT1.
<b>Host</b>	Rabbit
<b>Isotype</b>	IgG
<b>Purification</b>	Affinity purification
<b>Conjugation</b>	Unconjugated
<b>Formulation</b>	PBS with 0.02% sodium azide, 0.5% BSA and 50% glycerol, pH7.4

## Applications Recommended Dilution

<b>WB</b>	1:500-1:2000
<b>ELISA</b>	1:10000

## Data



www.elabscience.cn

Western Blot analysis of HeLa cells with EAAT1  
Polyclonal Antibody.  
**Observed Mw:65kDa**  
**Calculated Mw:60kDa**

## Preparation & Storage

**Storage** Store at -20°C. Avoid freeze / thaw cycles.

## Background

This gene encodes a member of a member of a high affinity glutamate transporter family. This gene functions in the termination of excitatory neurotransmission in central nervous system. Mutations are associated with episodic ataxia, Type 6. Alternative splicing results in multiple transcript variants.

## For Research Use Only

A Reliable Research Partner in Life Science and Medicine

Tel: 400-999-2100

Email: [techsupport@elabscience.cn](mailto:techsupport@elabscience.cn)

Web: [www.elabscience.cn](http://www.elabscience.cn)