

ALB Polyclonal Antibody

Catalog Number:E-AB-10001



Note: Centrifuge before opening to ensure complete recovery of vial contents.

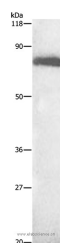
Description

Reactivity	Human
Immunogen	Recombinant protein of human ALB
Host	Rabbit
Isotype	IgG
Purification	Affinity purification
Conjugation	Unconjugated
Formulation	PBS with 0.05% sodium azide, 50% glycerol, PH7.3

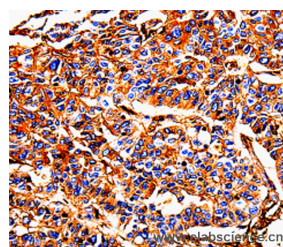
Applications Recommended Dilution

WB	1:500-1:2000
-----------	--------------

Data



Western Blot analysis of HepG2 cell using ALB Polyclonal Antibody at dilution of 1:500
Calculated Mw:69kDa



Immunohistochemistry of paraffin-embedded Human liver cancer using ALB Polyclonal Antibody at dilution of 1:25

Preparation & Storage

Storage Store at -20°C. Avoid freeze / thaw cycles.

Background

Albumin is a soluble, monomeric protein which comprises about one-half of the blood serum protein. Albumin functions primarily as a carrier protein for steroids, fatty acids, and thyroid hormones and plays a role in stabilizing extracellular fluid volume. Albumin is a globular unglycosylated serum protein of molecular weight 65,000. Albumin is synthesized in the liver as prealbumin which has an N-terminal peptide that is removed before the nascent protein is released from the rough endoplasmic reticulum. The product, proalbumin, is in turn cleaved in the Golgi vesicles to produce the secreted albumin.

For Research Use Only

A Reliable Research Partner in Life Science and Medicine

Tel: 400-999-2100

Email: techsupport@elabscience.cn

Web: www.elabscience.cn