

Note: Centrifuge before opening to ensure complete recovery of vial contents.

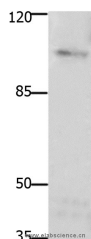
Description

Reactivity	Human,Mouse,Rat
Immunogen	Synthetic peptide of human PTK2
Host	Rabbit
Isotype	IgG
Purification	Affinity purification
Conjugation	Unconjugated
Formulation	PBS with 0.05% sodium azide, 50% glycerol, PH7.3

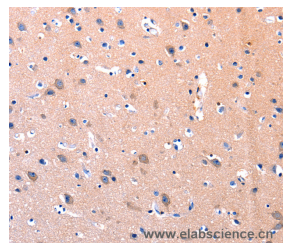
Applications Recommended Dilution

WB	1:2000-1:5000
IHC	1:100-1:300

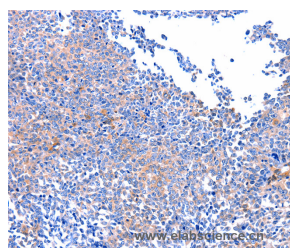
Data



Western Blot analysis of Mouse brain tissue using FAK Polyclonal Antibody at dilution of 1:1850
Calculated Mw:114kDa



Immunohistochemistry of paraffin-embedded Human brain using FAK Polyclonal Antibody at dilution of 1:75



Immunohistochemistry of paraffin-embedded Human ovarian cancer using FAK Polyclonal Antibody at dilution of 1:75

Preparation & Storage

Storage Store at -20°C. Avoid freeze / thaw cycles.

Background

This gene encodes a cytoplasmic protein tyrosine kinase which is found concentrated in the focal adhesions that form between cells growing in the presence of extracellular matrix constituents. The encoded protein is a member of the FAK subfamily of protein tyrosine kinases but lacks significant sequence similarity to kinases from other subfamilies. Activation of this gene may be an important early step in cell growth and intracellular signal transduction pathways

For Research Use Only

A Reliable Research Partner in Life Science and Medicine

Tel: 400-999-2100

Email: techsupport@elabscience.cn

Web: www.elabscience.cn

FAK Polyclonal Antibody

Catalog Number:E-AB-12402



triggered in response to certain neural peptides or to cell interactions with the extracellular matrix. Several transcript variants encoding different isoforms have been found for this gene, but the full-length natures of only three of them have been determined.

For Research Use Only

A Reliable Research Partner in Life Science and Medicine

Tel: 400-999-2100

Email: techsupport@elabscience.cn

Web: www.elabscience.cn