

Phospho-SMAD2/3 (Thr8) Polyclonal Antibody

Catalog Number: E-AB-21040

7 Publications

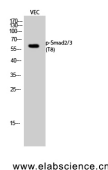


Phospho-SMAD2/3 (Thr8) Polyclonal Antibody

Catalog No.	E-AB-21040	Reactivity	H,M,R
Storage	Store at -20°C. Avoid freeze / thaw cycles.	Host	Rabbit
Applications	WB,ELISA	Isotype	IgG

Note: Centrifuge before opening to ensure complete recovery of vial contents.

Images



Western Blot analysis of VEC cells with Phospho-Smad2/3 (Thr8) Polyclonal Antibody

Immunogen Information

Immunogen	Synthesized peptide derived from human Smad2/3 around the phosphorylation site of Thr8
Swissprot	Q15796,P84022
Synonyms	SMAD2,MADH2,MADR2,Mothers against decapentaplegic homolog 2,MAD homolog 2,Mothers against DPP homolog 2,JV18-1,Mad-related protein 2,hMAD-2,SMAD family member 2,SMAD 2,Smad2,hSMAD2,SMAD3,MADH3,Mothers against decapentaplegic

Product Information

Calculated MW	48kDa
Observed MW	48kDa
Buffer	PBS with 0.02% sodium azide, 0.5% BSA and 50% glycerol, pH7.4
Purify	Affinity purification
Dilution	WB,,1:500-1:2000;ELISA,,1:10000;

Background

SMAD is a family of proteins similar to the gene products of the *Drosophila* gene 'mothers against decapentaplegic' (Mad) and the *C. elegans* gene Sma. SMAD proteins are signal transducers and transcriptional modulators that mediate multiple signaling pathways. They mediate the signal of the transforming growth factor (TGF)-beta, and thus regulate multiple cellular processes, such as cell proliferation, apoptosis, and differentiation.

For Research Use Only

A Reliable Research Partner in Life Science and Medicine

Tel: 400-999-2100

Email: techsupport@elabscience.cn

Web: www.elabscience.cn