

Galectin 3 Monoclonal Antibody

Catalog Number:E-AB-22006

Note: Centrifuge before opening to ensure complete recovery of vial contents.

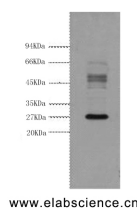
Description

Reactivity	Human
Immunogen	Synthetic Peptide
Host	Mouse
Isotype	IgG
Clone	Clone:1A2
Purification	Protein A purification
Conjugation	Unconjugated
Formulation	PBS with 0.02% sodium azide, 50% glycerol, pH7.4

Applications Recommended Dilution

WB	1:1000-1:3000
IHC	1:100-1:300
IF	1:100-200

Data

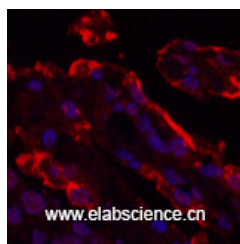


Western Blot analysis of HeLa cells using Galectin 3 Monoclonal Antibody at dilution of 1:3000.

Observed Mw:26kDa
Calculated Mw:26kDa



Immunohistochemistry of paraffin-embedded Human thyroid tissue using Galectin 3 Monoclonal Antibody at dilution of 1:200.



Immunofluorescence analysis of Human lung cancer tissue using Galectin 3 Monoclonal Antibody at dilution of 1:200.

Preparation & Storage

Storage Store at -20°C. Avoid freeze / thaw cycles.

Background

For Research Use Only

A Reliable Research Partner in Life Science and Medicine

Tel: 400-999-2100

Email: techsupport@elabscience.cn

Web: www.elabscience.cn

Galectin 3 Monoclonal Antibody

Catalog Number:E-AB-22006



Galactose-specific lectin which binds IgE. May mediate with the alpha-3, beta-1 integrin the stimulation by CSPG4 of endothelial cells migration. Together with DMBT1, required for terminal differentiation of columnar epithelial cells during early embryogenesis.

For Research Use Only

A Reliable Research Partner in Life Science and Medicine

Tel: 400-999-2100

Email: techsupport@elabscience.cn

Web: www.elabscience.cn