

COL4A1 Monoclonal Antibody

Catalog Number: E-AB-22150

1 Publications



Note: Centrifuge before opening to ensure complete recovery of vial contents.

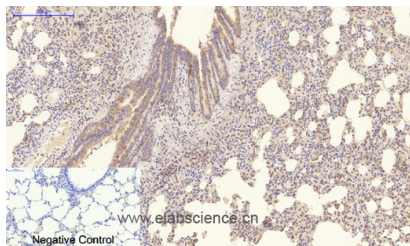
Description

Reactivity	Human, Mouse, Rat
Immunogen	Synthetic Peptide of Collagen IV
Host	Mouse
Isotype	IgG
Clone	Clone: 6F6
Purification	Protein A purification
Conjugation	Unconjugated
Formulation	PBS with 0.02% sodium azide, 50% glycerol, pH7.4

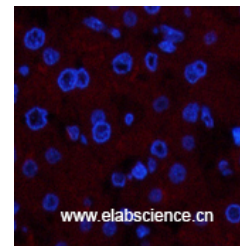
Applications

Applications	Recommended Dilution
IHC	1:50-300
IF	1:50-1:200

Data



Immunohistochemistry of paraffin-embedded Rat lung tissue using COL4A1 Monoclonal Antibody at dilution of 1:200.



Immunofluorescence analysis of Human liver tissue using COL4A1 Monoclonal Antibody at dilution of 1:200.

Preparation & Storage

Storage Store at -20°C. Avoid freeze / thaw cycles.

Background

This gene encodes the major type IV alpha collagen chain of basement membranes. Like the other members of the type IV collagen gene family, this gene is organized in a head-to-head conformation with another type IV collagen gene so that each gene pair shares a common promoter.

For Research Use Only

A Reliable Research Partner in Life Science and Medicine

Tel: 400-999-2100

Email: techsupport@elabscience.cn

Web: www.elabscience.cn