

BAX Monoclonal Antibody

Catalog Number:E-AB-22212



Note: Centrifuge before opening to ensure complete recovery of vial contents.

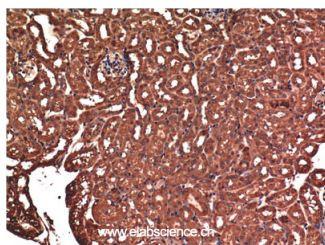
Description

Reactivity	Human,Mouse,Rat
Immunogen	Synthetic Peptide of Bax
Host	Mouse
Isotype	IgG
Clone	Clone:1C1
Purification	Protein A purification
Formulation	PBS with 0.02% sodium azide,0.5% BSA and 50% glycerol pH 7.4.

Applications Recommended Dilution

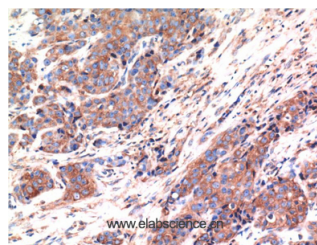
IHC	1:100-200
------------	-----------

Data



Immunohistochemistry of paraffin-embedded Mouse kidney tissue using Bax Monoclonal Antibody at dilution of 1:200.

Observed Mw:20kDa



Immunohistochemistry of paraffin-embedded Human breast carcinoma tissue using Bax Monoclonal Antibody at dilution of 1:200.

Preparation & Storage

Storage Store at -20°C. Avoid freeze / thaw cycles.

Background

Accelerates programmed cell death by binding to, and antagonizing the apoptosis repressor BCL2 or its adenovirus homolog E1B 19k protein. Under stress conditions, undergoes a conformation change that causes translocation to the mitochondrion membrane, leading to the release of cytochrome c that then triggers apoptosis. Promotes activation of CASP3, and thereby apoptosis.

For Research Use Only

A Reliable Research Partner in Life Science and Medicine

Tel: 400-999-2100

Email: techsupport@elabscience.cn

Web: www.elabscience.cn