

p27 Polyclonal Antibody

Catalog Number:E-AB-70069

3 Publications

Note: Centrifuge before opening to ensure complete recovery of vial contents.

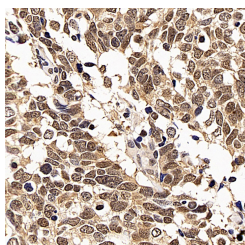
Description

Reactivity	Human,Rat
Immunogen	KLH conjugated Synthetic peptide corresponding to Mouse P27 KIP1
Host	Rabbit
Isotype	IgG
Purification	Affinity purification
Conjugation	Unconjugated
Formulation	PBS with 0.02% sodium azide,100 µg/ml BSA and 50% glycerol.

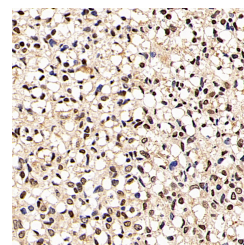
Applications Recommended Dilution

IHC	1:100-1:400
------------	-------------

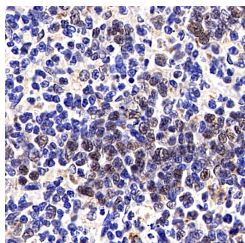
Data



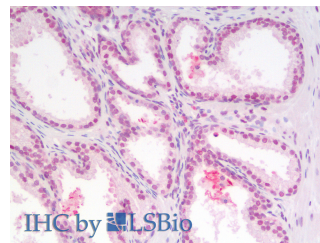
Immunohistochemistry analysis of paraffin-embedded human lung cancer using p27 Polyclonal Antibody at dilution of 1:200.



Immunohistochemistry analysis of paraffin-embedded human liver cancer using p27 Polyclonal Antibody at dilution of 1:200.



Immunohistochemistry analysis of paraffin-embedded Rat spleen cancer using p27 Polyclonal Antibody at dilution of 1:200.



Immunohistochemistry analysis of paraffin-embedded Human Prostate using p27 Polyclonal Antibody(Elabscience[®] Product Detected by Lifespan).

Preparation & Storage

Storage Store at -20°C. Avoid freeze / thaw cycles.

Background

This gene encodes a cyclin-dependent kinase inhibitor, which shares a limited similarity with CDK inhibitor CDKN1A/p21. The encoded protein binds to and prevents the activation of cyclin E-CDK2 or cyclin D-CDK4 complexes, and thus controls the cell cycle progression at G1. The degradation of this protein, which is triggered by its CDK dependent phosphorylation and subsequent ubiquitination by SCF complexes, is required for the cellular transition

For Research Use Only

A Reliable Research Partner in Life Science and Medicine

Tel: 400-999-2100

Email: techsupport@elabscience.cn

Web: www.elabscience.cn

p27 Polyclonal Antibody

Catalog Number: E-AB-70069

3 Publications



from quiescence to the proliferative state. Mutations in this gene are associated with multiple endocrine neoplasia type IV (MEN4).

For Research Use Only

A Reliable Research Partner in Life Science and Medicine

Tel: 400-999-2100

Email: techsupport@elabscience.cn

Web: www.elabscience.cn