

**Note:** Centrifuge before opening to ensure complete recovery of vial contents.

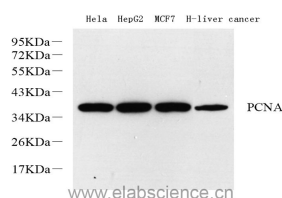
## Description

<b>Reactivity</b>	Human,Mouse,Rat
<b>Immunogen</b>	Recombinant protein corresponding to Mouse PCNA
<b>Host</b>	Rabbit
<b>Isotype</b>	IgG
<b>Purification</b>	Affinity purification
<b>Conjugation</b>	Unconjugated
<b>Formulation</b>	PBS with 0.02% sodium azide,100 µg/ml BSA and 50% glycerol.

## Applications Recommended Dilution

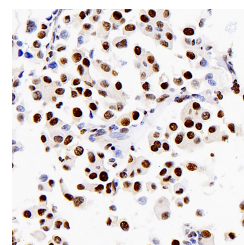
<b>WB</b>	1:500-1:2000
<b>IHC</b>	1:500-1:1000

## Data

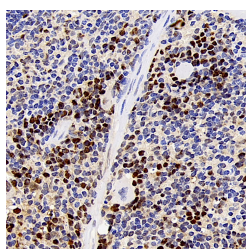


Western Blot analysis of various samples using Proliferating Cell Nuclear Antigen Polyclonal Antibody at dilution of 1:1000.

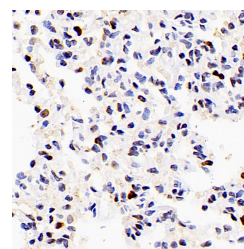
**Observed Mw:36kDa**  
**Calculated Mw:36kDa**



Immunohistochemistry analysis of paraffin-embedded human lung cancer using Proliferating Cell Nuclear Antigen Polyclonal Antibody at dilution of 1:1000.



Immunohistochemistry analysis of paraffin-embedded Mouse spleen using Proliferating Cell Nuclear Antigen Polyclonal Antibody at dilution of 1:1000.



Immunohistochemistry analysis of paraffin-embedded Rat lung using Proliferating Cell Nuclear Antigen Polyclonal Antibody at dilution of 1:1000.

## Preparation & Storage

**Storage** Store at -20°C. Avoid freeze / thaw cycles.

## Background

Proliferating Cell Nuclear Antigen, commonly known as PCNA, is a protein that acts as a processivity factor for DNA

## For Research Use Only

A Reliable Research Partner in Life Science and Medicine

Tel: 400-999-2100

Email: [techsupport@elabscience.cn](mailto:techsupport@elabscience.cn)

Web: [www.elabscience.cn](http://www.elabscience.cn)

# PCNA Polyclonal Antibody

Catalog Number: E-AB-70285



polymerase  $\delta$  in eukaryotic cells. This protein is an auxiliary protein of DNA polymerase delta and is involved in the control of eukaryotic DNA replication by increasing the polymerase's processibility during elongation of the leading strand. PCNA induces a robust stimulatory effect on the 3'-5' exonuclease and 3'-phosphodiesterase, but not apurinic-aprimidinic (AP) endonuclease, APEX2 activities. It has to be loaded onto DNA in order to be able to stimulate APEX2. PCNA protein is highly conserved during evolution; the deduced amino acid sequences of rat and human differ by only 4 of 261 amino acids. PCNA has been used as loading control for proliferating cells.

---

## For Research Use Only

A Reliable Research Partner in Life Science and Medicine

Tel: 400-999-2100

Email: [techsupport@elabscience.cn](mailto:techsupport@elabscience.cn)

Web: [www.elabscience.cn](http://www.elabscience.cn)